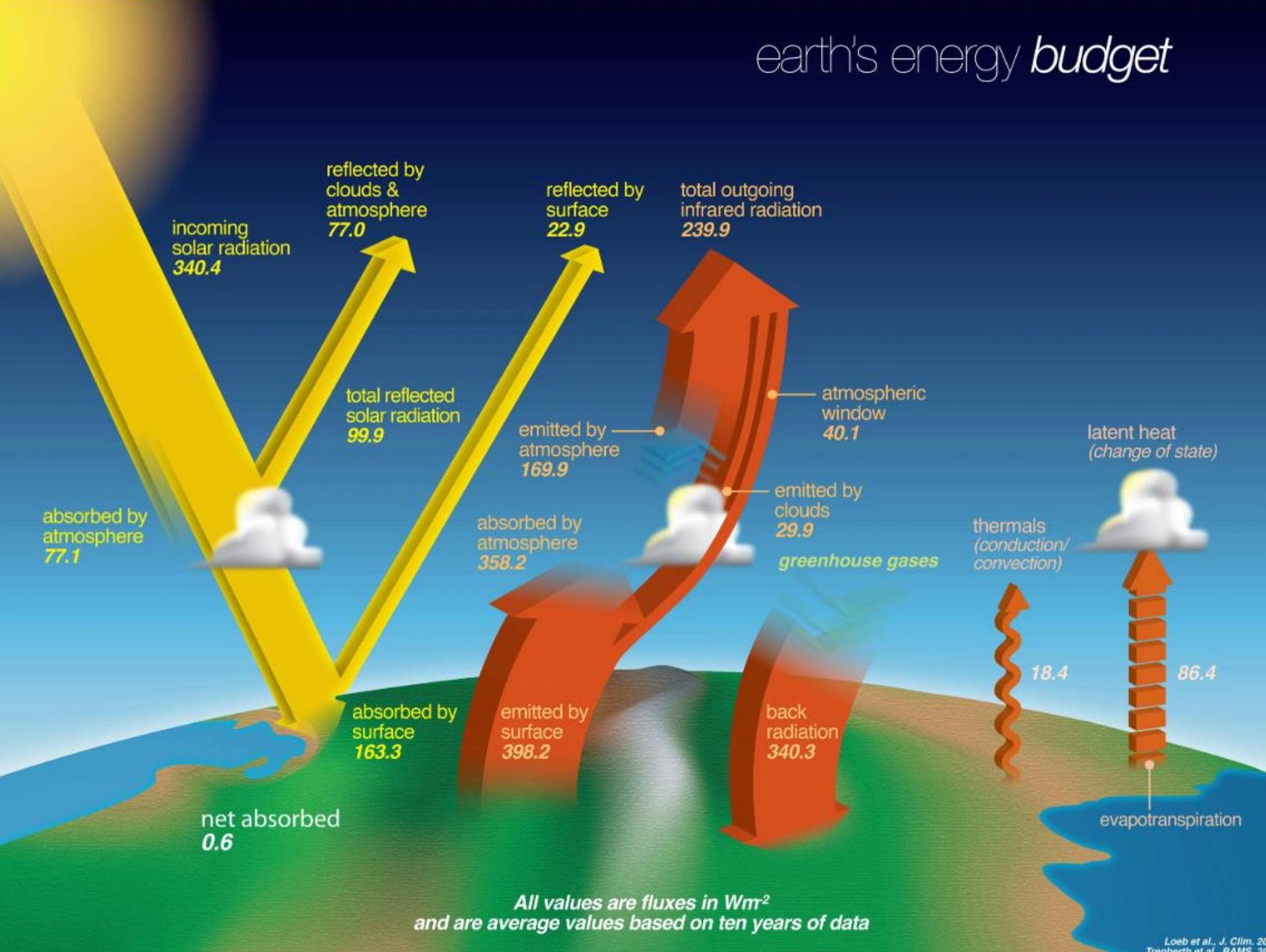


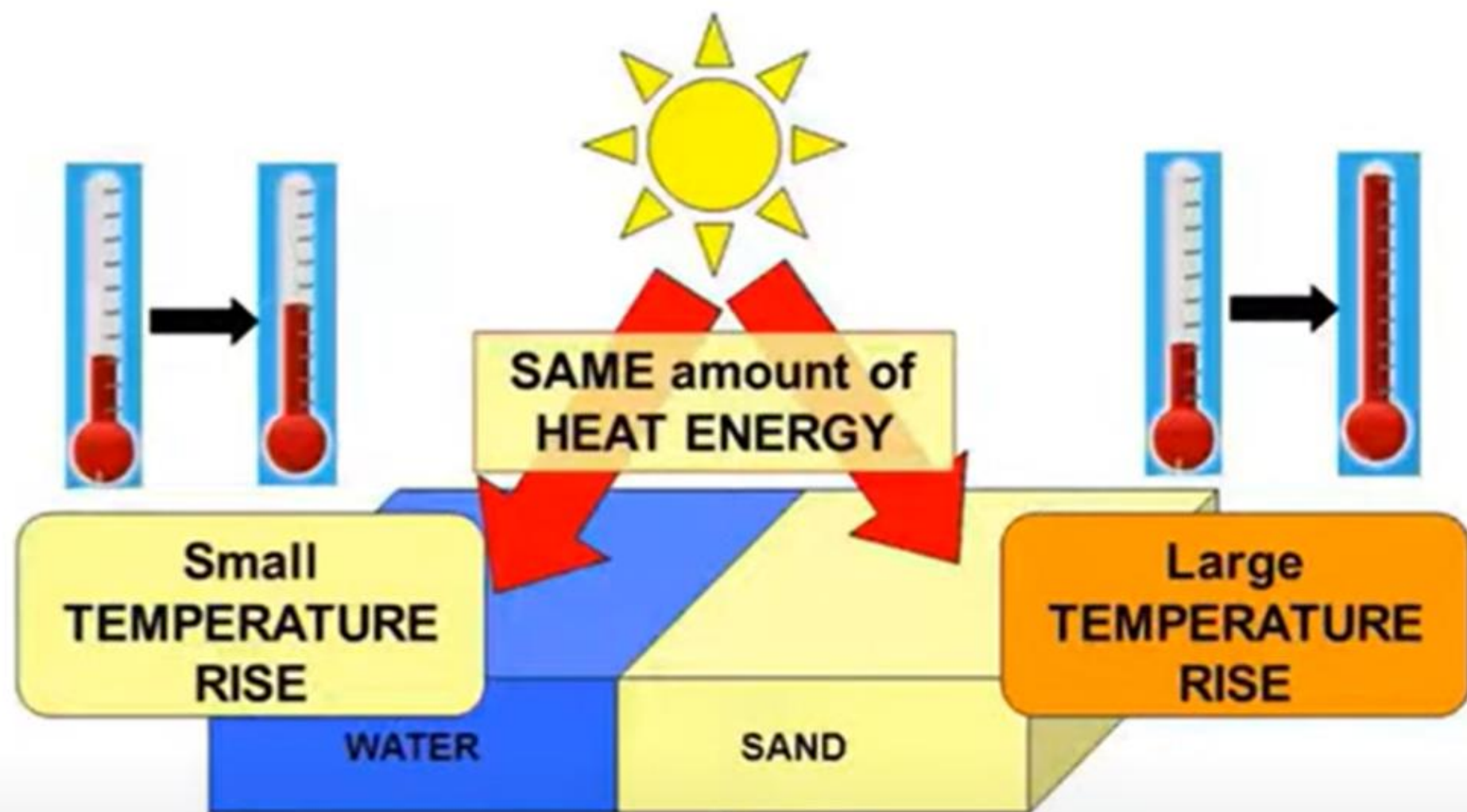
Yfirborðshiti á Íslandi 2001-2023

- Haraldur Ólafsson og Iman Rousta

earth's energy budget



Loeb et al., J. Clim. 20
Toonberth et al., BAMS, 20



Putting the SAME AMOUNT OF HEAT into some materials gives a BIGGER TEMPERATURE RISE than in other materials

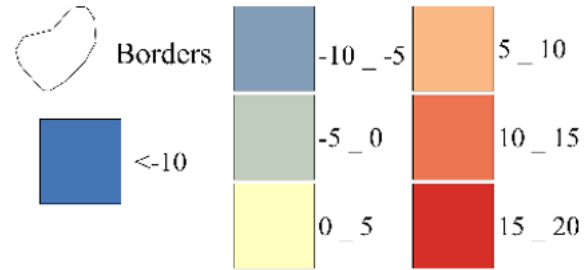
Lofthiti í 2 m hæð getur verið töluvert frábrugðinn yfirborðshitenum

- Í glampanði sólskini yfir þurrum, svörtum sandi
- Í heiðríkju að næturlagi



Meðalyfirborðshiti

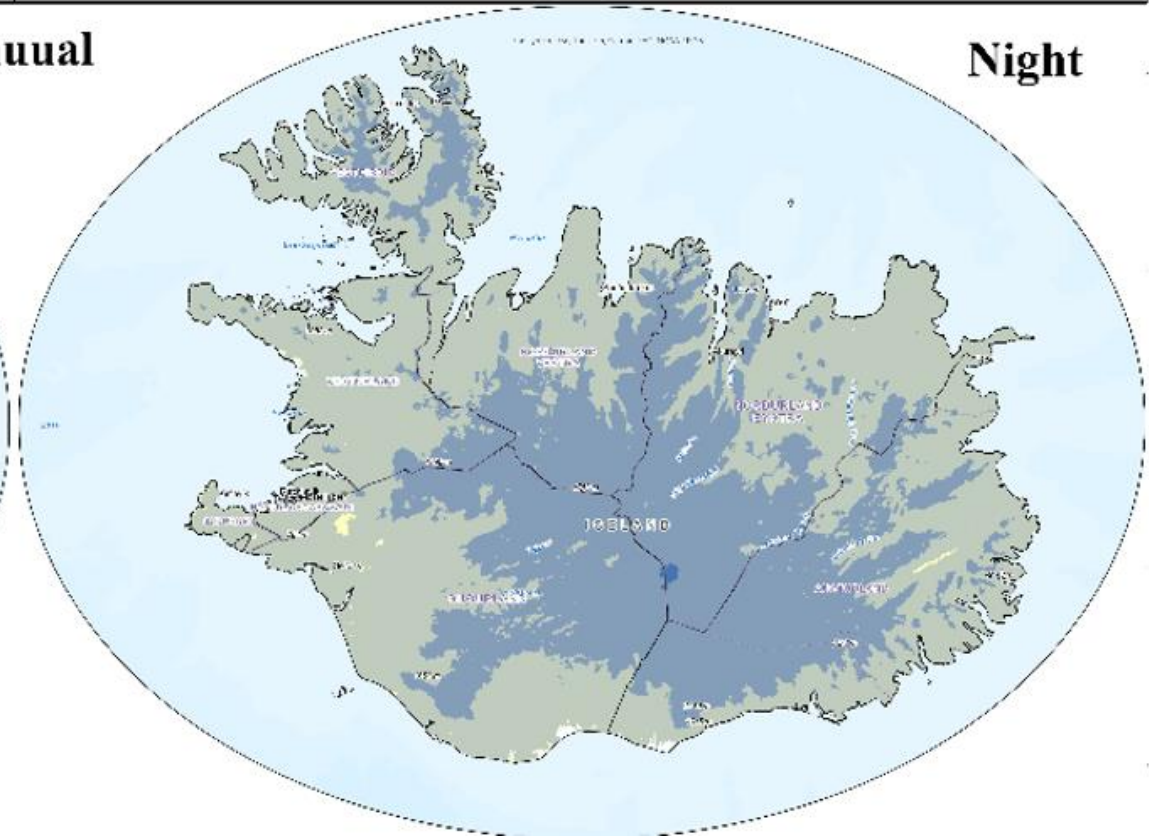
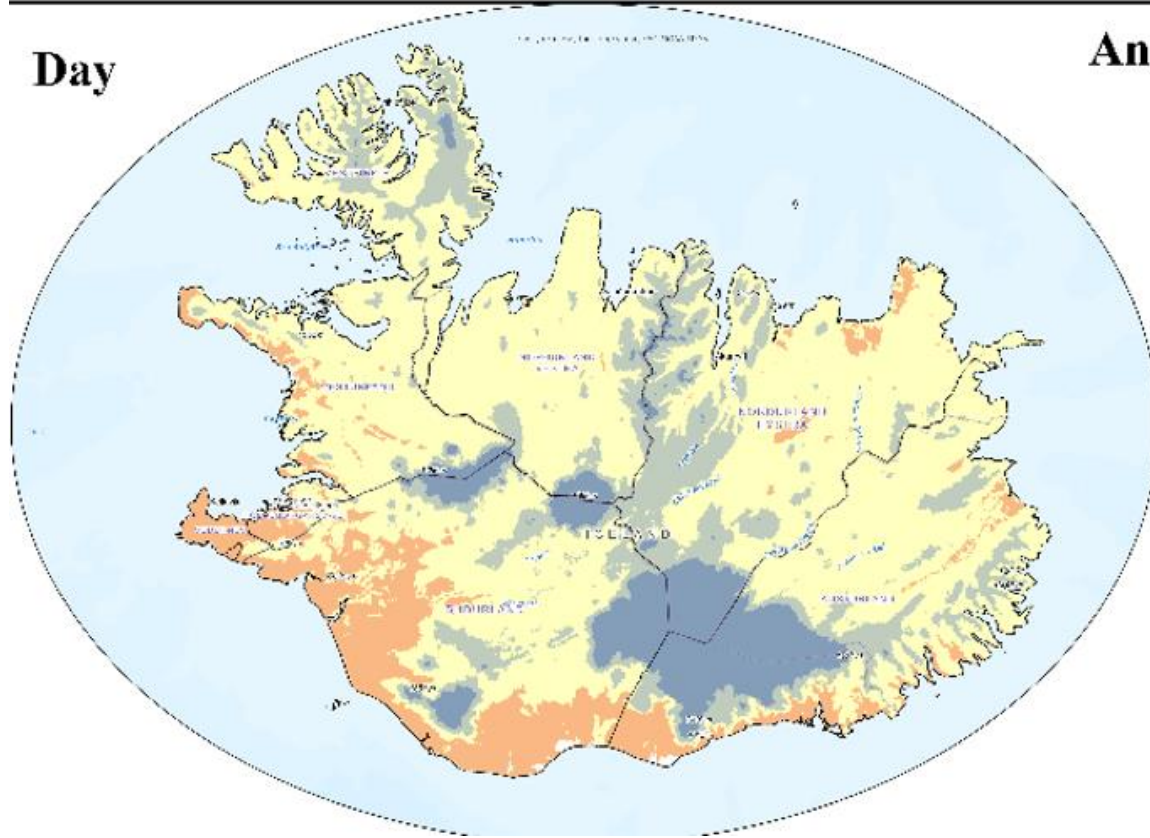
LST °C



Day

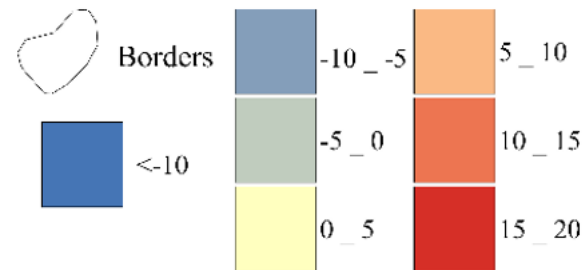
Annual

Night



Meðalhámark yfirborðshita

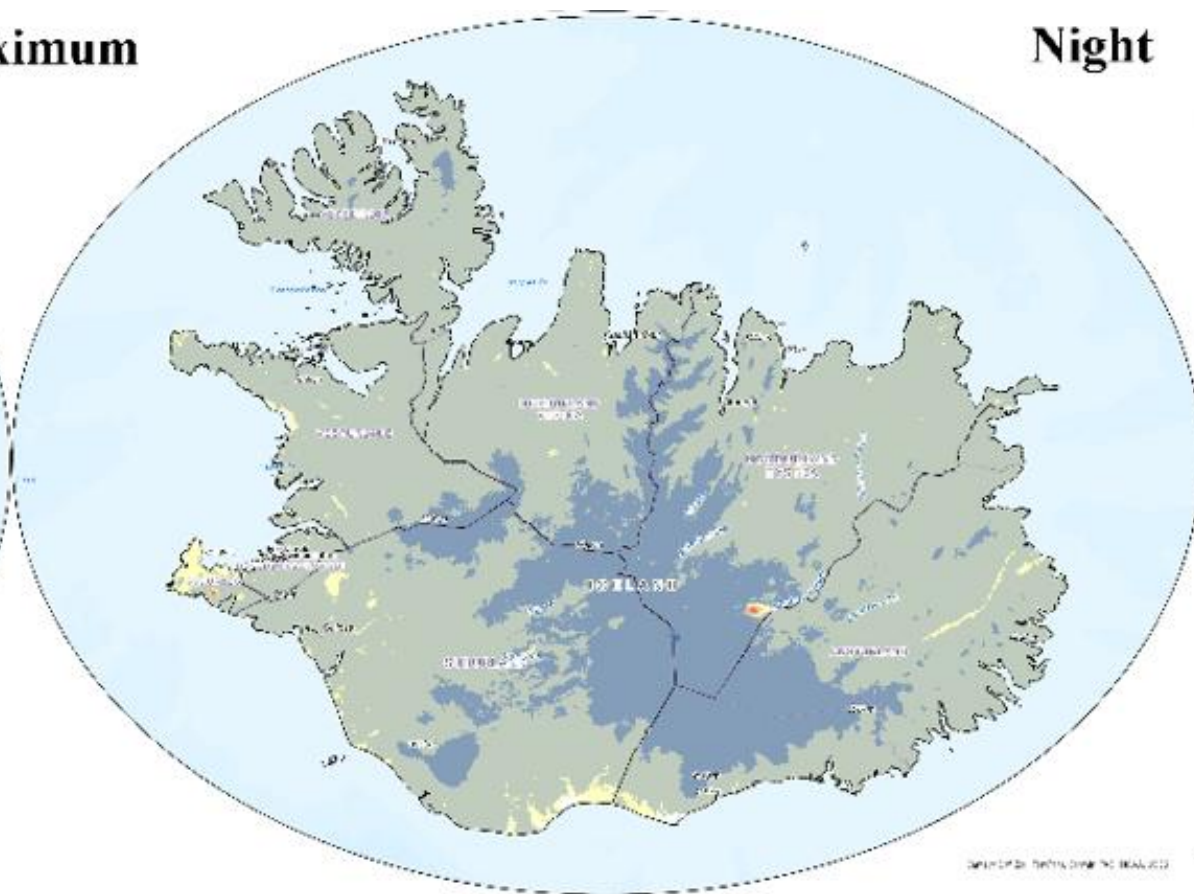
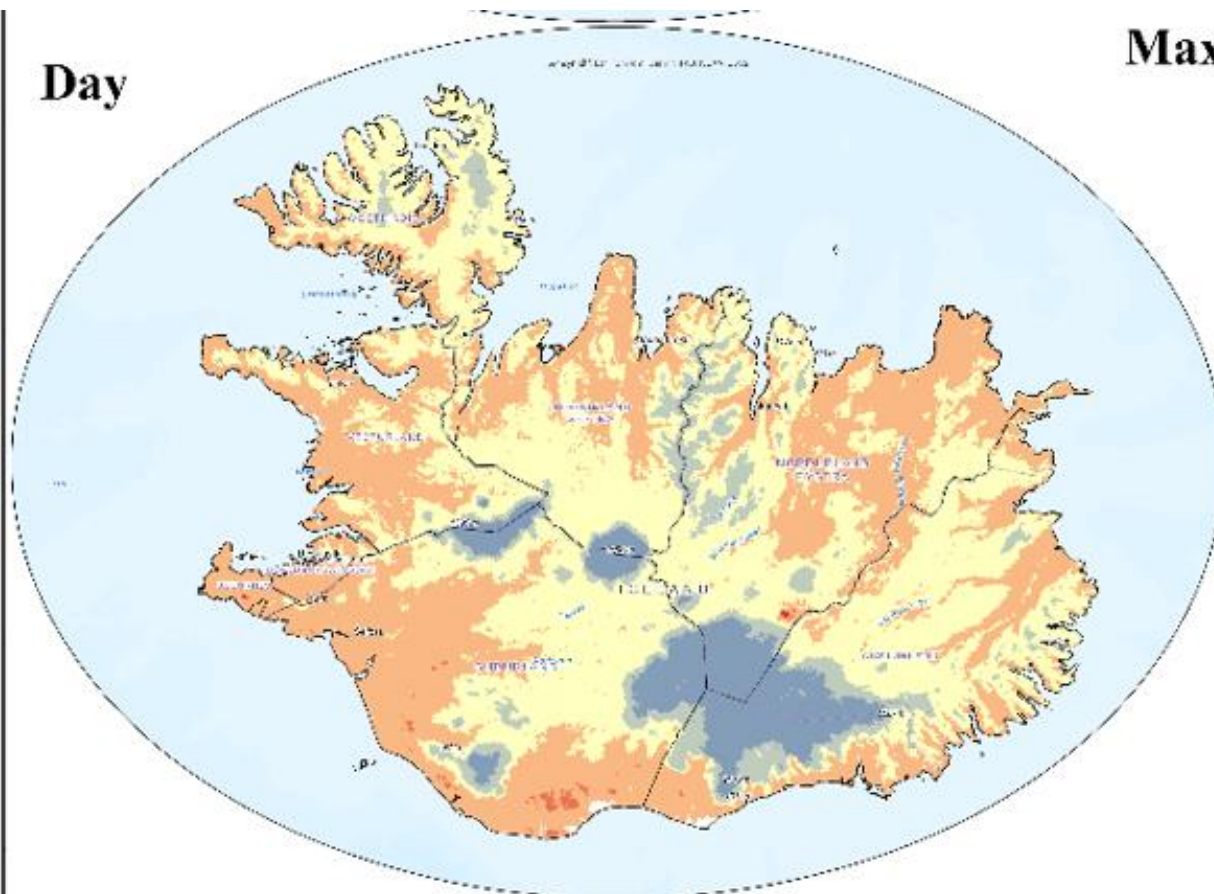
LST °C



Day

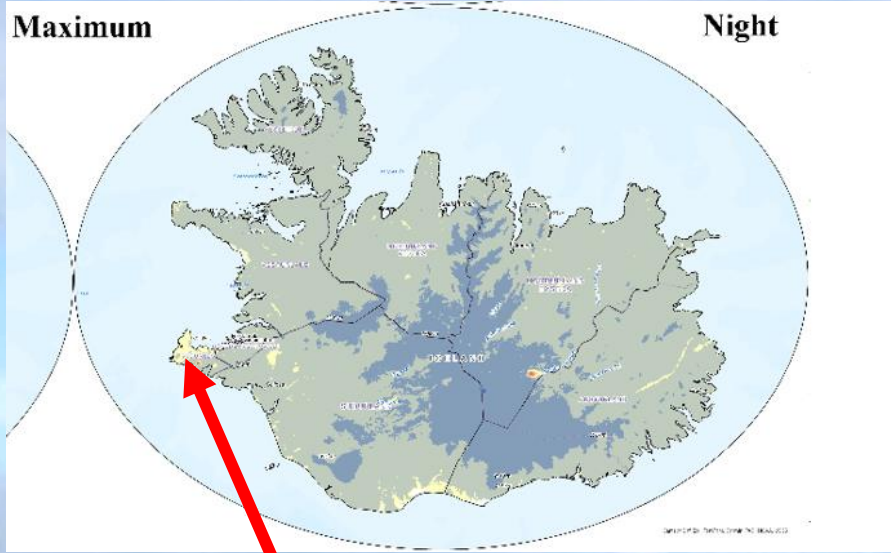
Maximum

Night



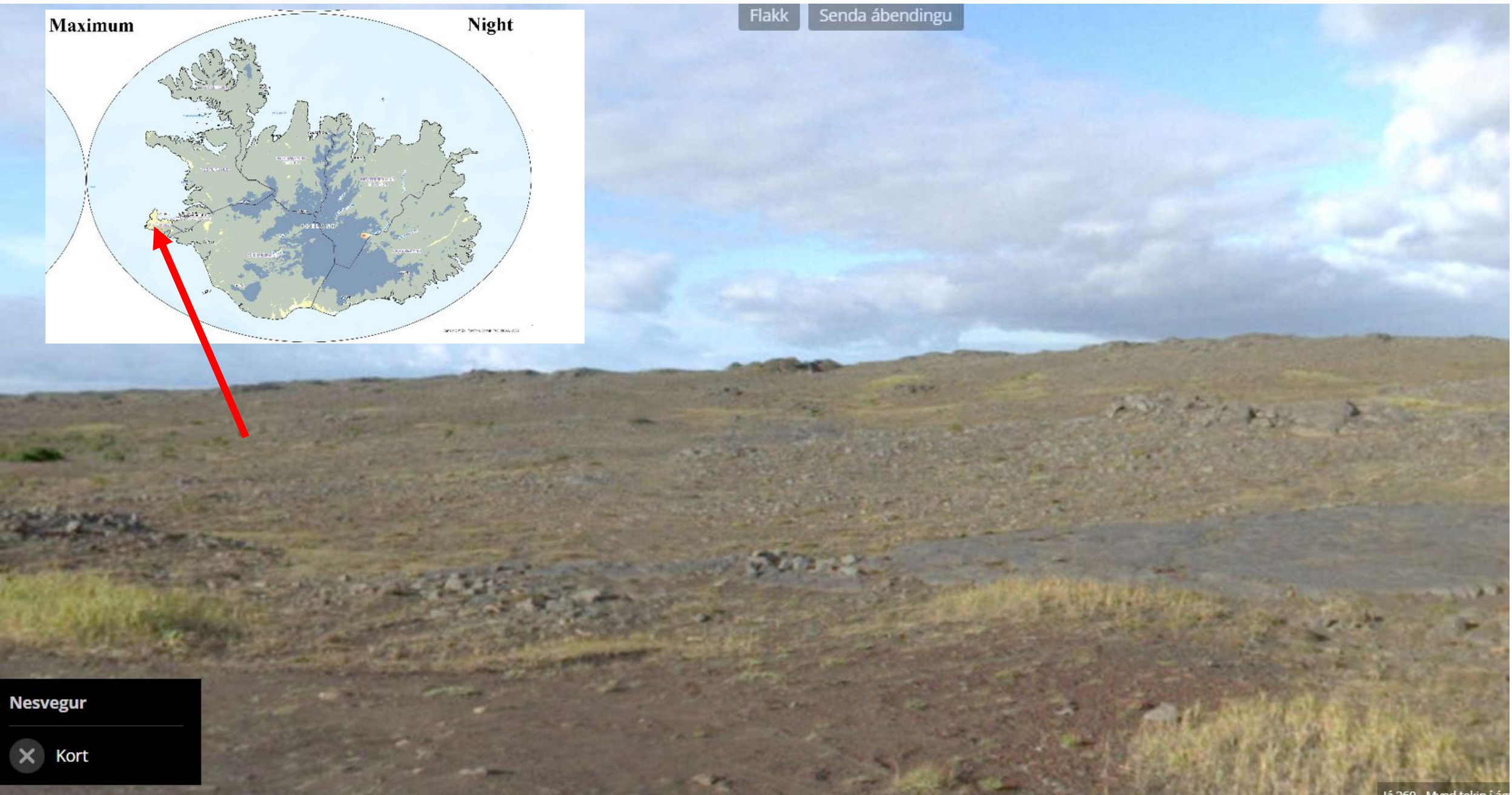
Maximum

Night



Flakk

Senda ábendingu

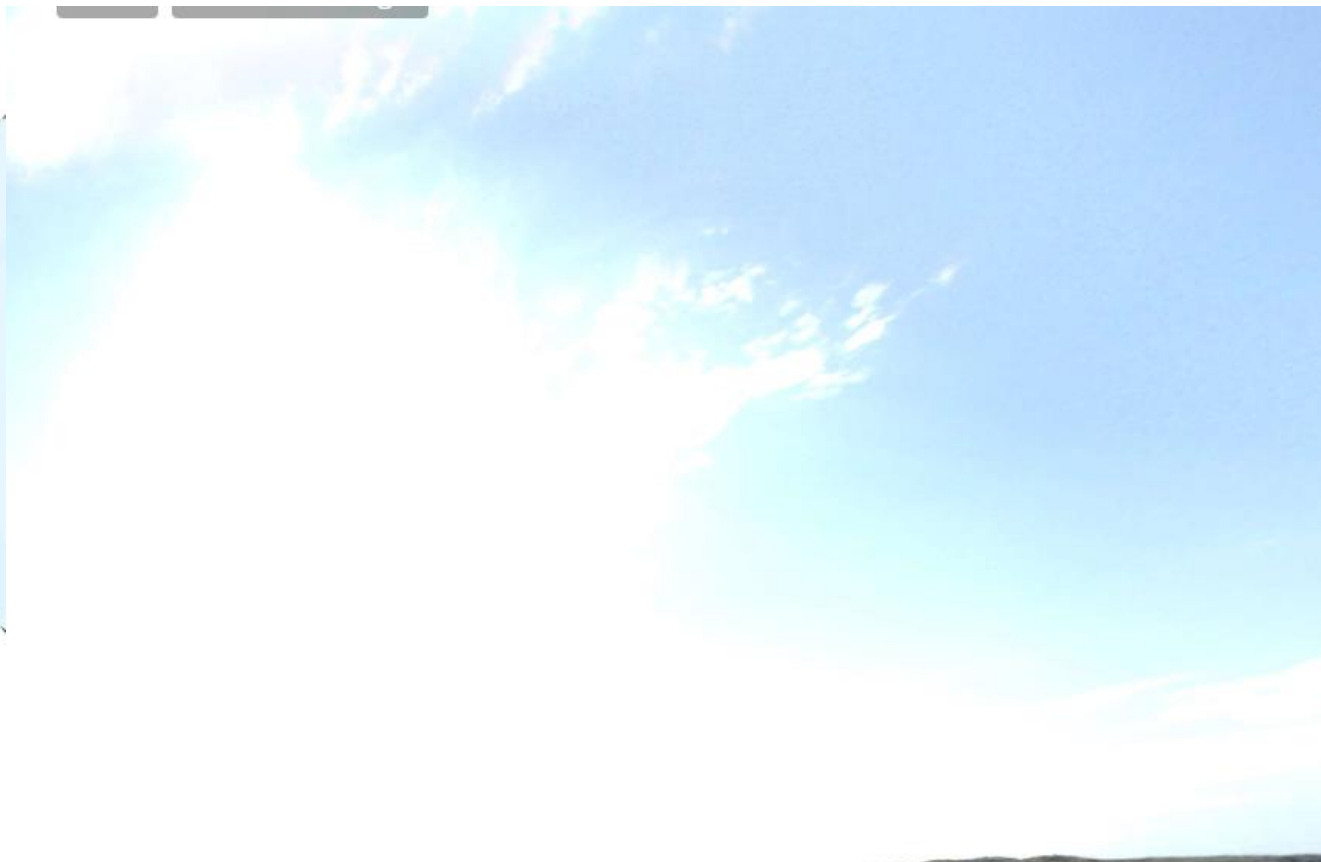
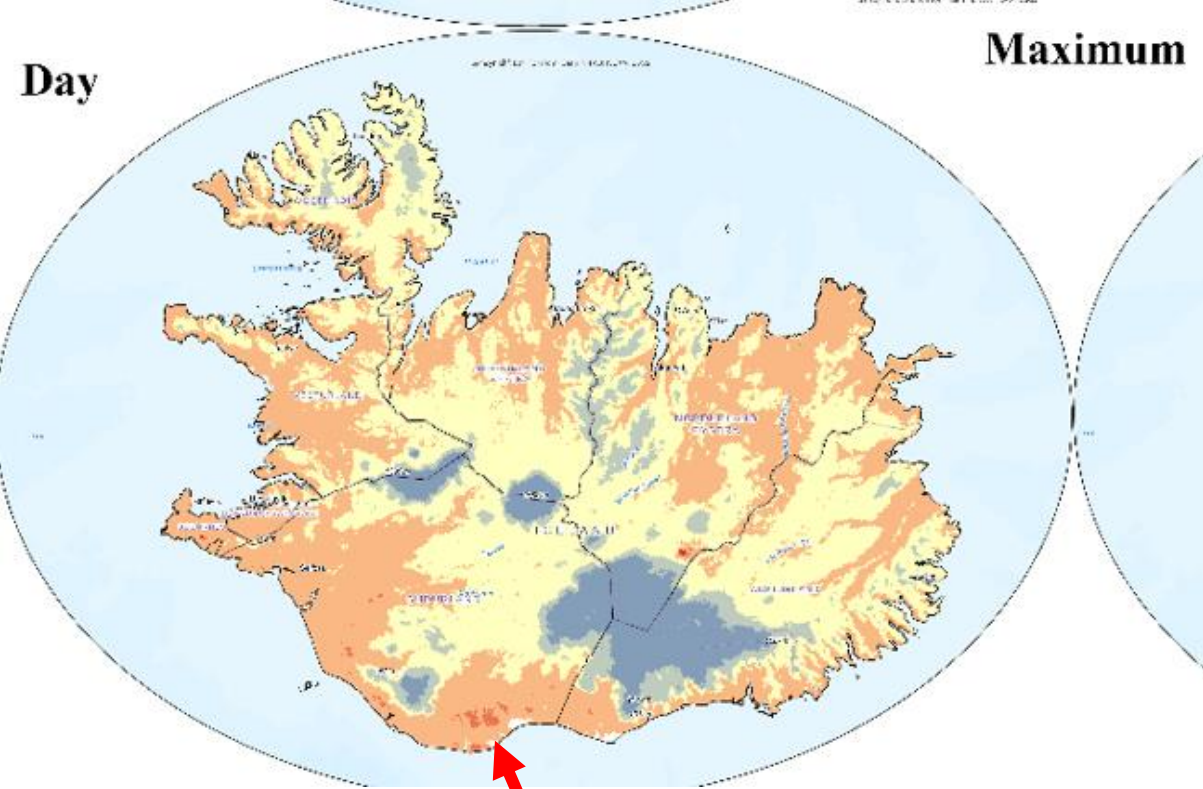


Nesvegur

✕ Kort

Day

Maximum



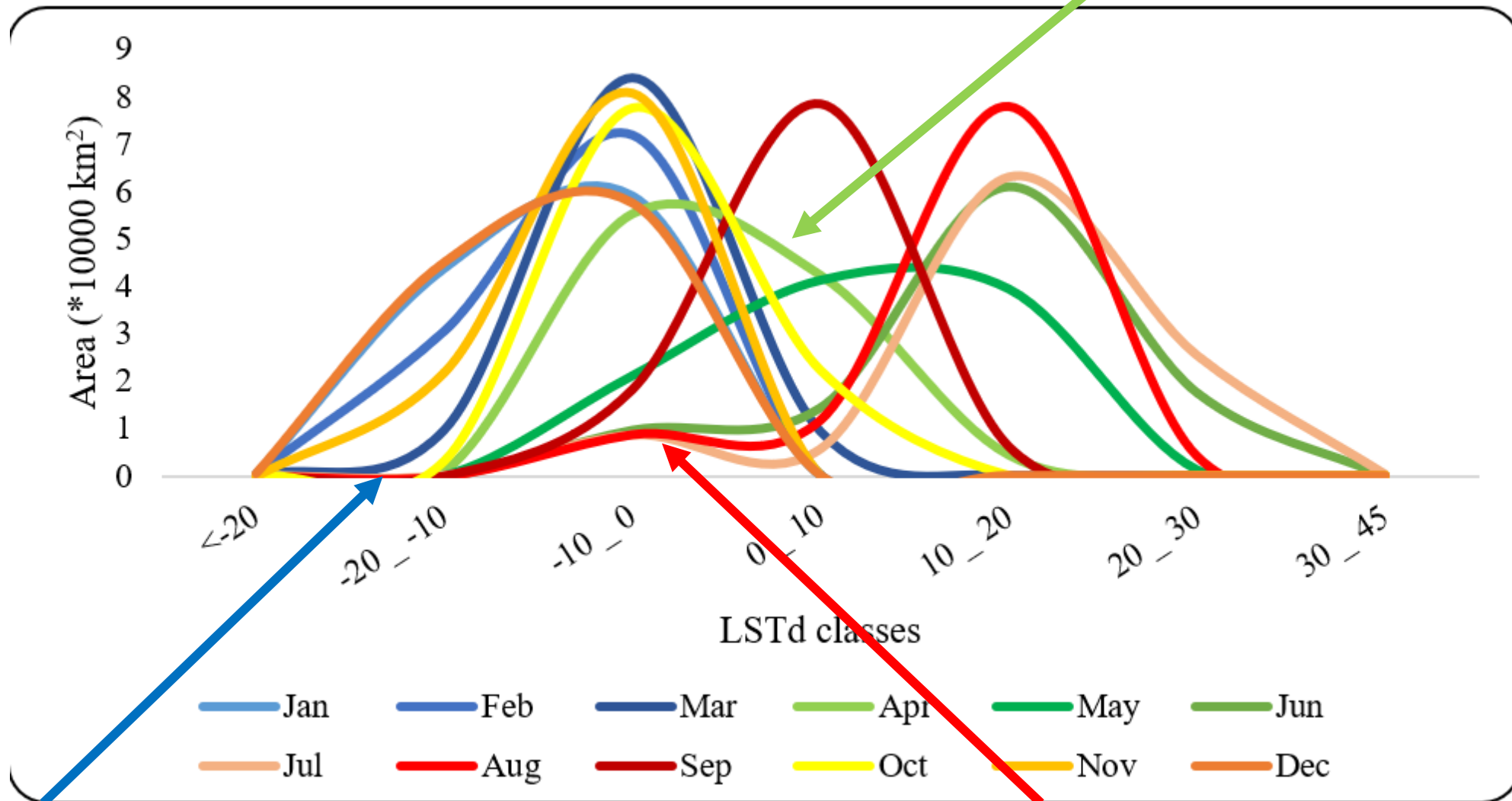
Meðallandsvegur



Kort

Árstíðasveifla að degi til

Útflatt á vorin

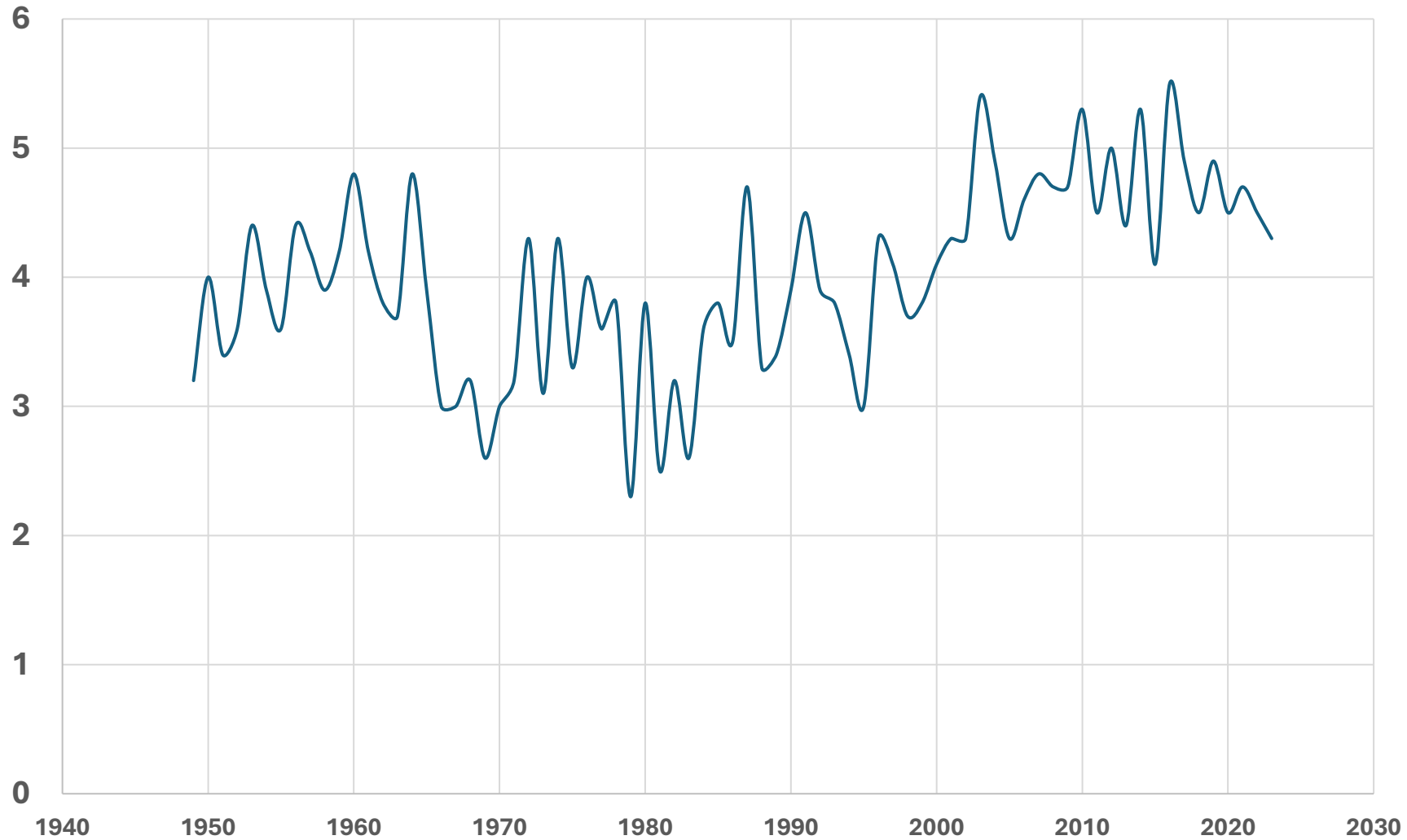


Mars miklu hlýrri en janúar

Kalt á snjó og ís allt sumarið

Meðalárshiti í Stykkishólmi (°C)

Meðalárshiti í Stykkishólmi °C



Meðalfrávik yfirborðshita (°C)

Töluverður breytileiki milli
ára, en enginn augljós
langtímaleitni

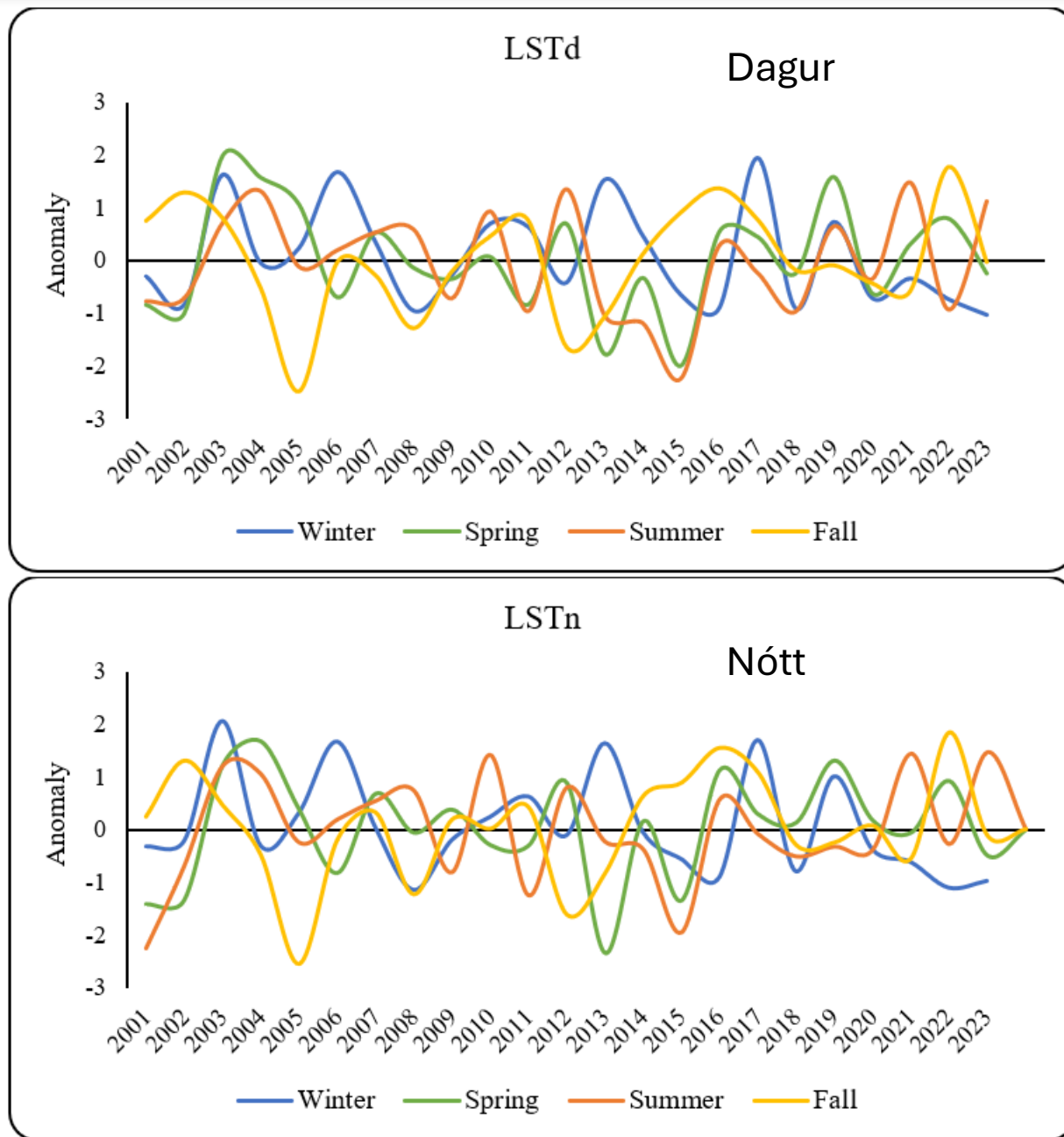
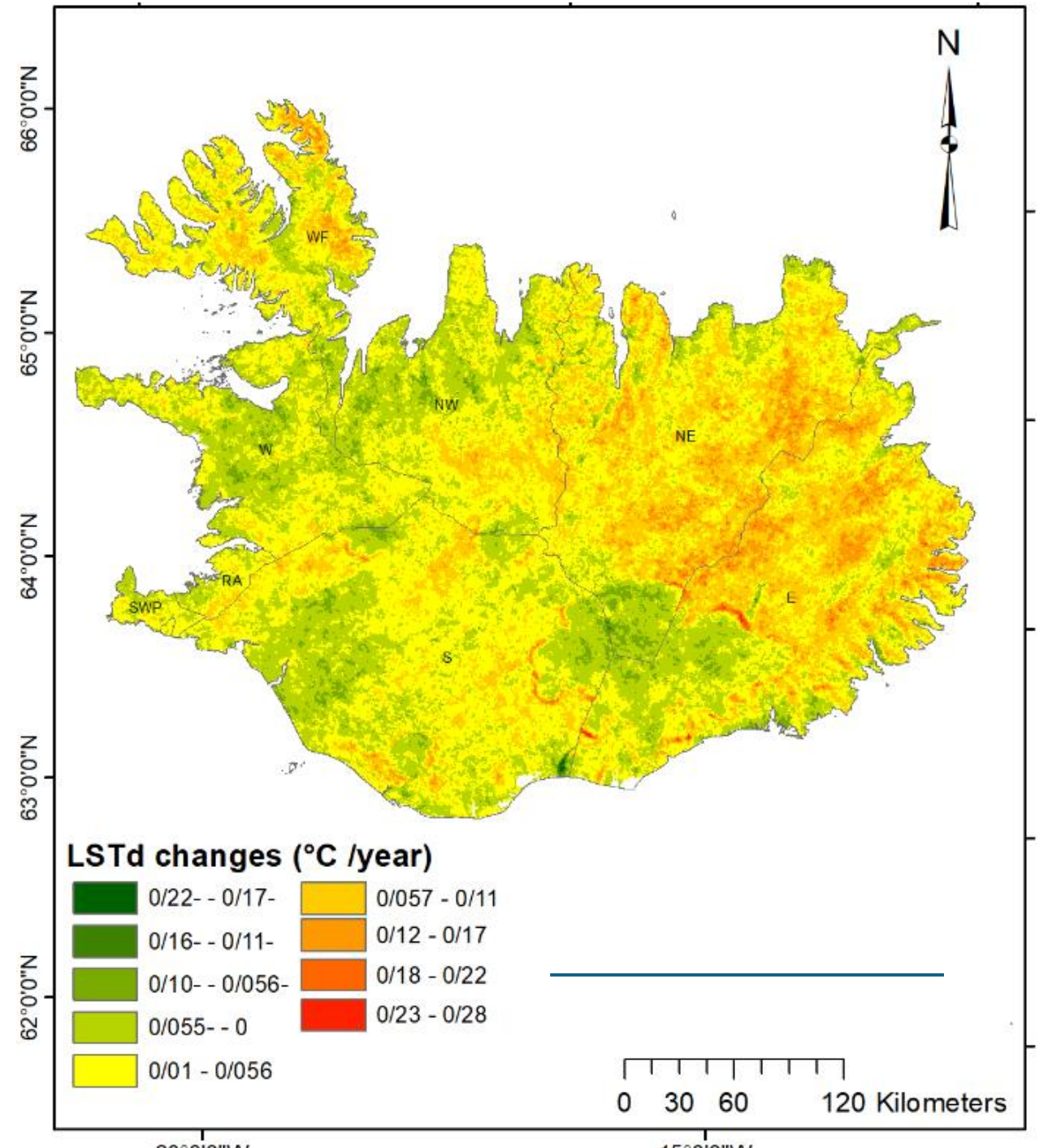



Figure 5: Average seasonal anomaly of LSTd and LSTn in Iceland from 2001-2023

Leitni yfirborðshita að degi til 2001-2023

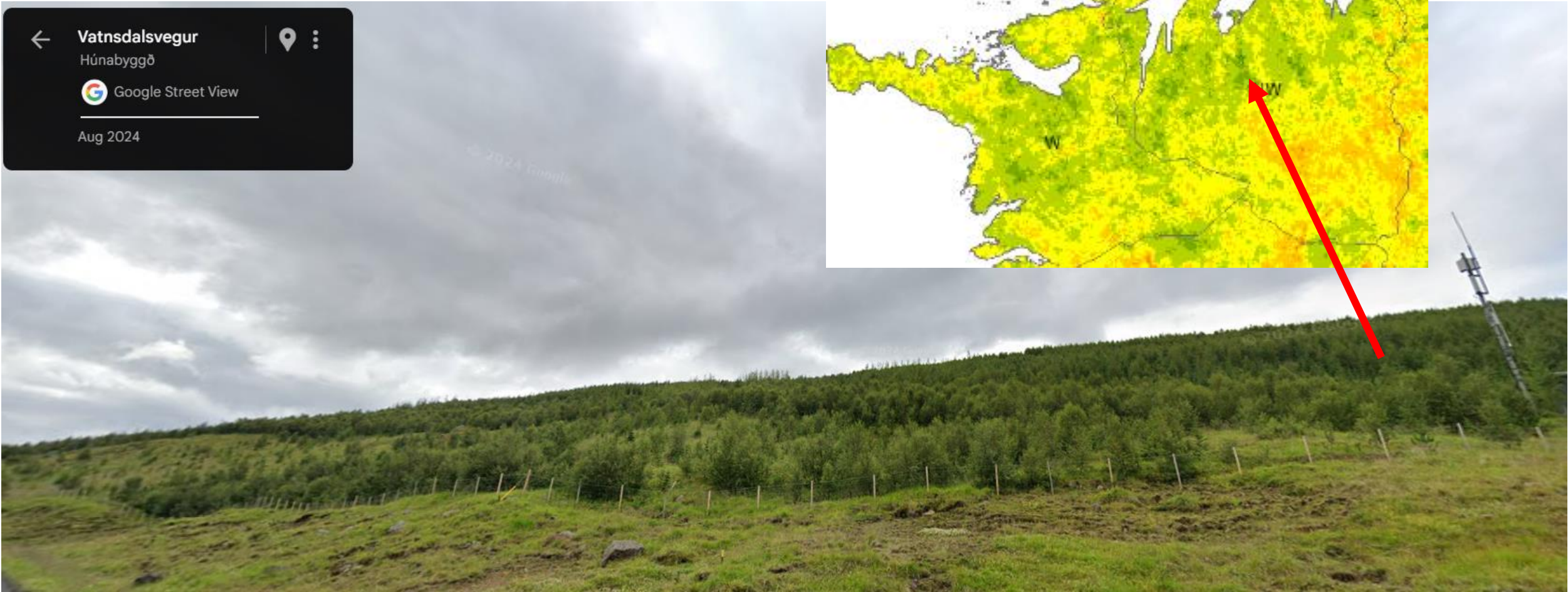
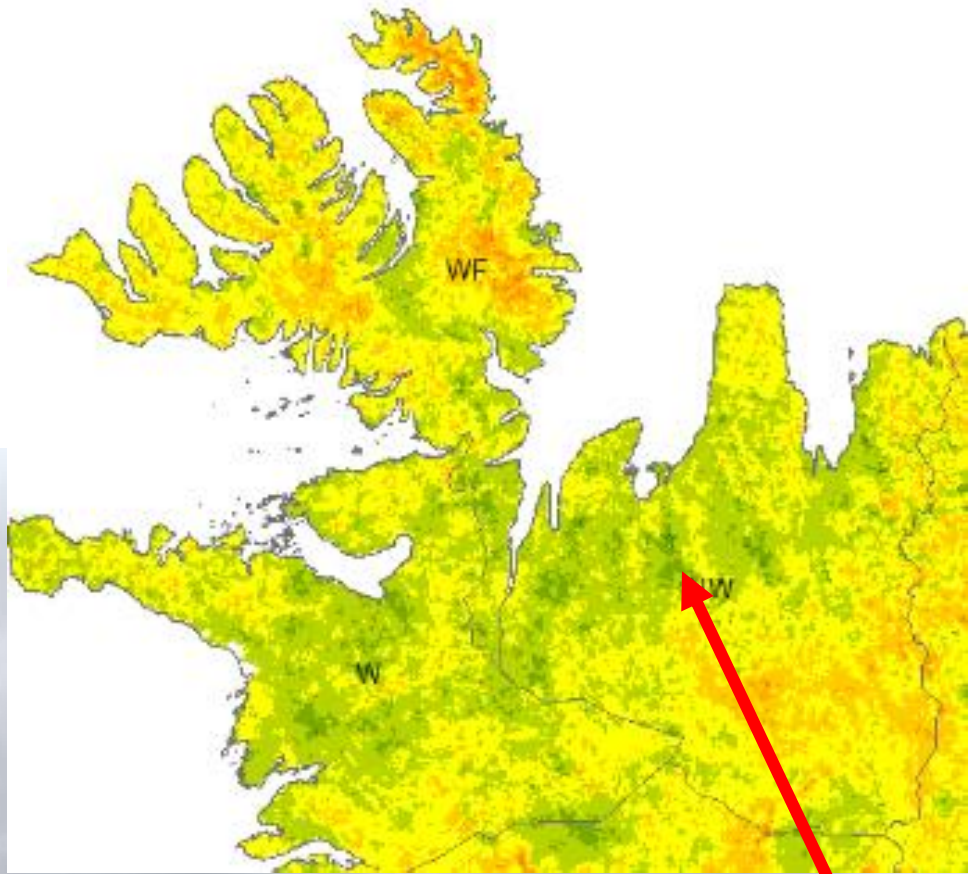
- Hopandi jöklar
- Hækkandi hiti til fjalla N og A-lands
- Lækkandi hiti á láglendi og upp í nokkur hundruð metra hæð um landið vestanvert



← **Vatnsdalsvegur**
Húnabyggð

 Google Street View

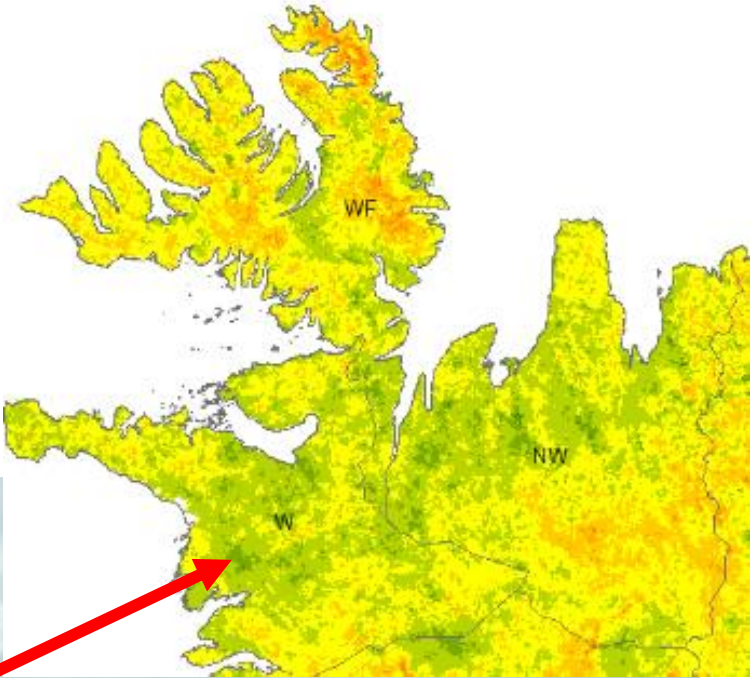
Aug 2024



← Einkunnir Natural Park

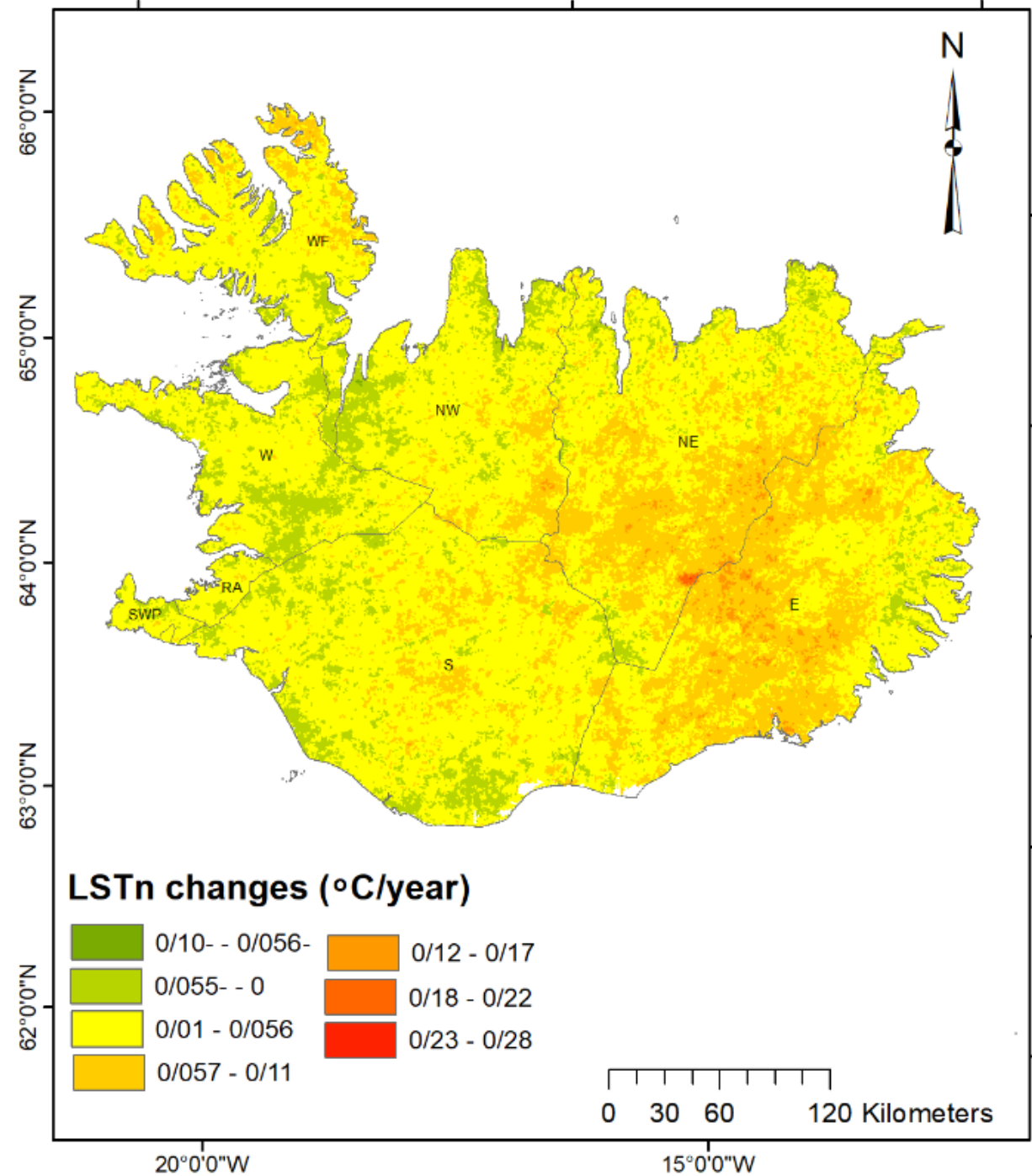
Óskar Þór Þráinsson

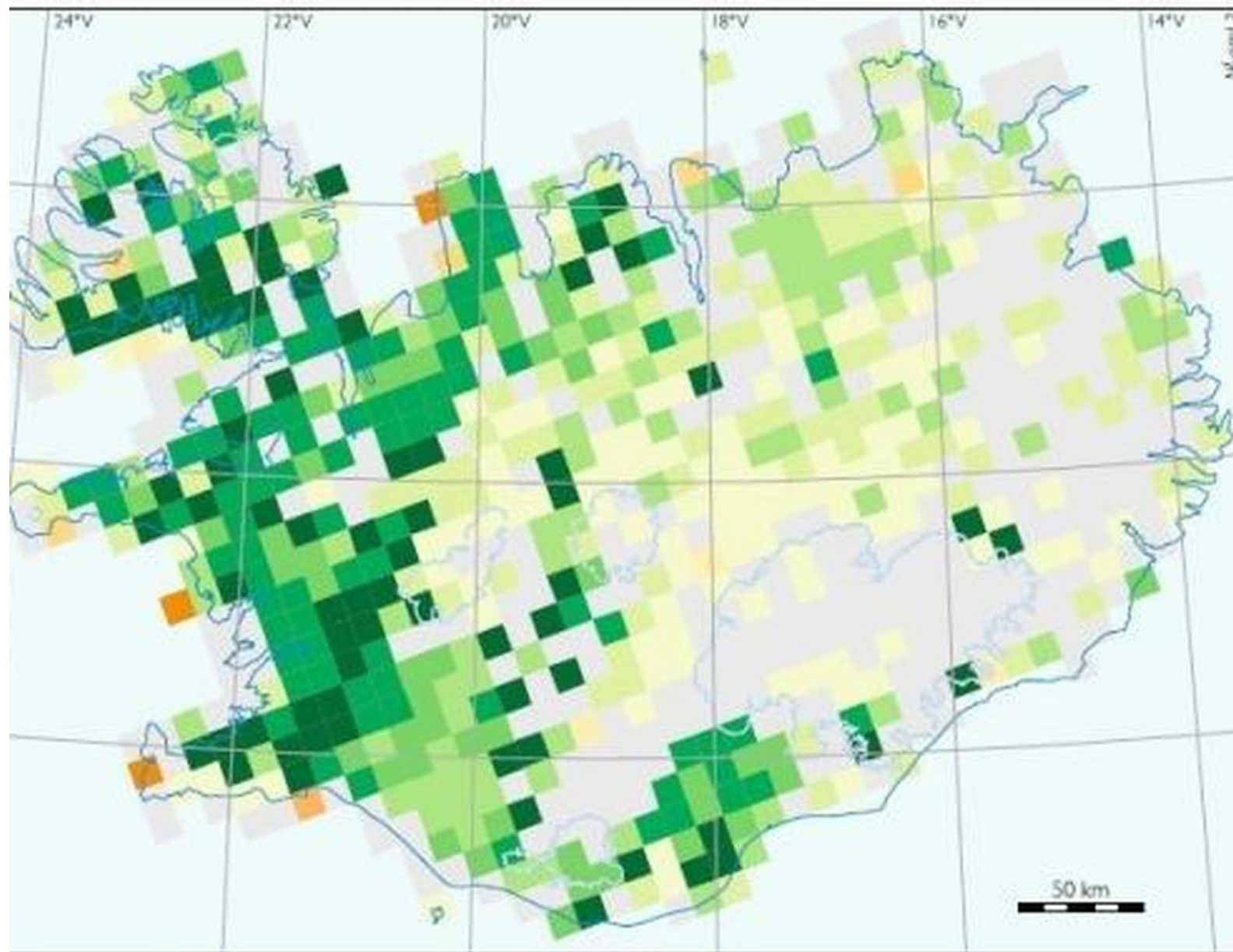
Aug 2021



Leitni yfirborðshita að næturlagi 2001-2023

Mynstrið svipað og að degi til,
en útslagið minna



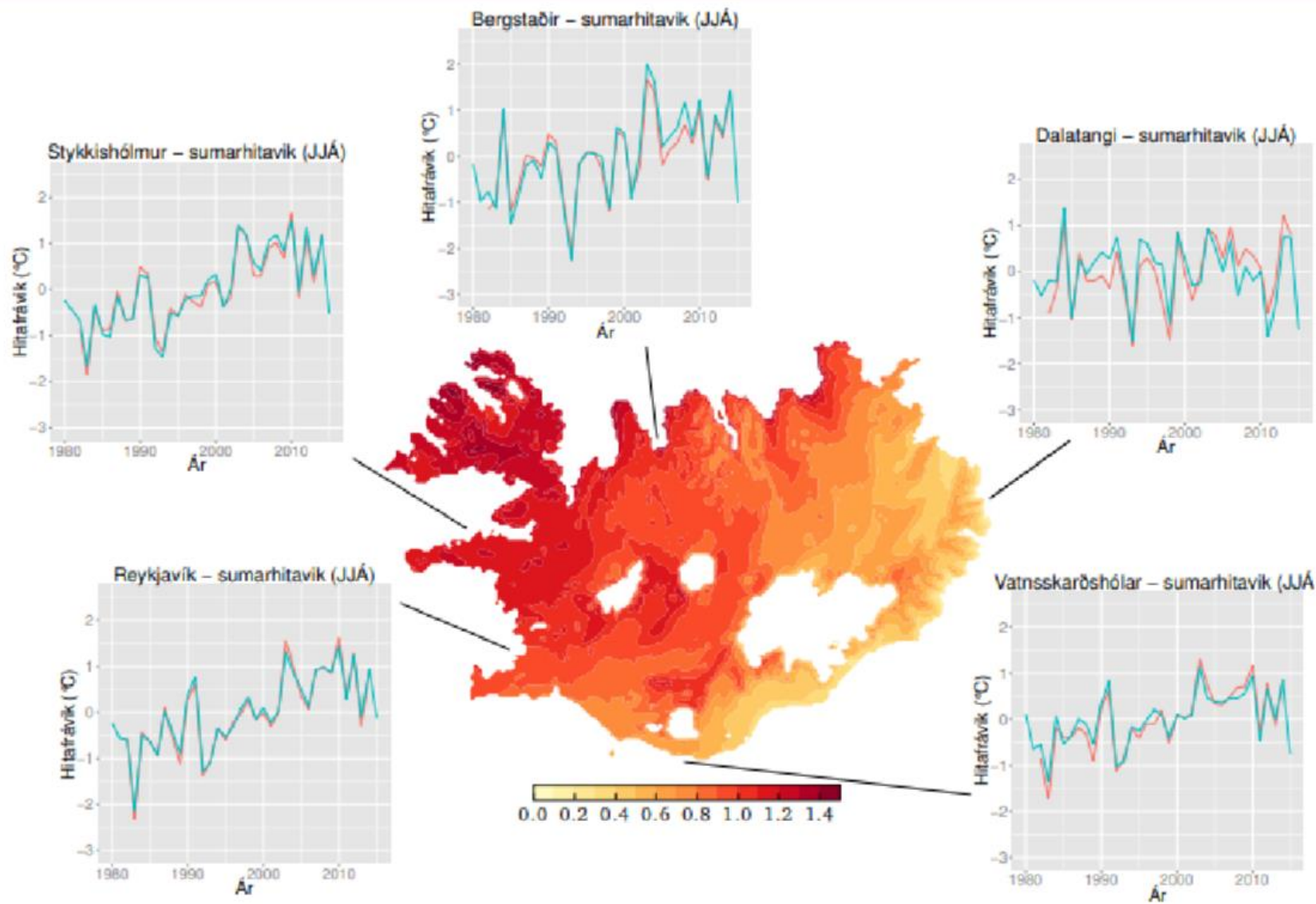


Breytingar á lífmassa (kg/m²/ár)

- > 0,02
- 0,015 – 0,020
- 0,010 – 0,015
- 0,005 – 0,010
- 0,0025 – 0,005
- 0 – 0,0025
- 0,0025 – 0
- 0,005 – -0,0025
- 0,010 – -0,005
- < -0,01

Breytingar ekki marktækar

uð meðalbreyting á lífmassa gróðurs á Íslandi tímabilið 1982–2010.



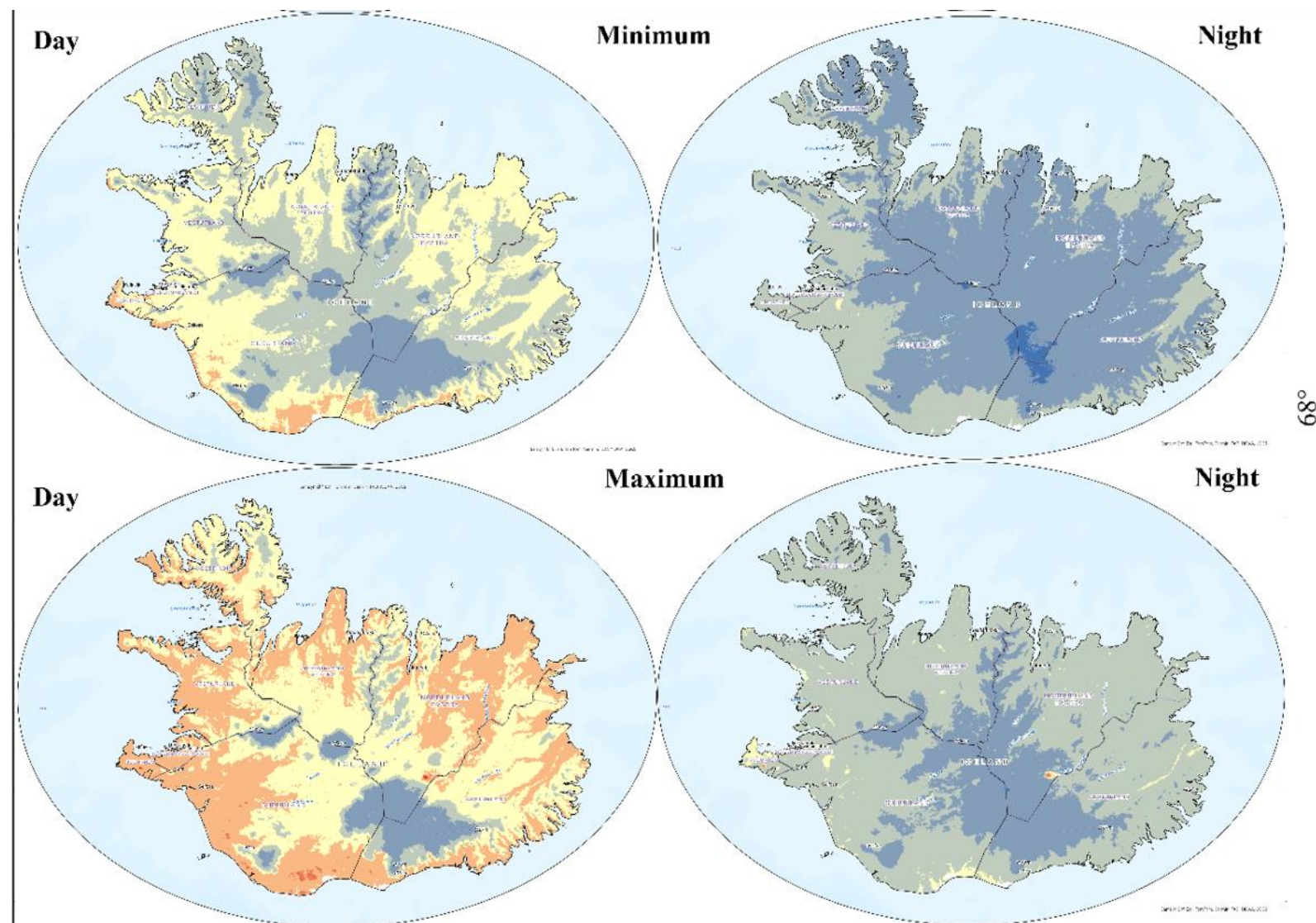
Mynd 4.14 Hlýnun að sumarlagi á Íslandi síðustu áratugi. Sambærilegt við mynd 4.13 nema hér eru einungis notuð gögn fyrir sumarmánuðina (júní til ágúst).

Yfirborðshiti á Íslandi 2021-2023

- Ekki skýrar langtímabreytingar í meðalhita á landinu i heild sinni, en verulegur breytileiki milli landshluta
- Yfirborðshiti hækkar töluvert á norðan- og austanverðu landinu þegar komið er spotta upp fyrir sjávarmál
- Yfirborðshiti lækkar töluvert að degi til um vestanvert landið, nema til fjalla
- Vatnajökull hopar og það voru eldgos á Íslandi
-

Búiđ

Meðalhámark og meðallágmark yfirborðshita



Navigation

average

47 results

Headings Pages **Results**

The highest annual **average** LSTd was recorded in the Southwest Peninsula Region (SWPB) at 5.7°C, Region (SWPB) at 5.7°C, and the lowest **average** LSTd was in the Eastern Region (EB) at 0.2°C (EB) at 0.2°C. For LSTn, the highest annual **average** was about -1°C in the SWPB and the lowest same time. Iceland is mountainous with an **average** elevation of 500 meters above sea level. The is predominantly mountainous, with an **average** elevation of 500 meters above sea level. The in the southern lowlands where the **average** annual precipitation is about 1000 mm. nature, Iceland's summers are pleasant, with **average** temperatures in the lowlands ranging between **averages** were computed using formulas 1 to 5 and Table 4 based on daily images using GEE and In Figure 2, the **average** annual Land Surface Temperature during day (LSTd) and nighttime (LSTn) Figure 4 displays the monthly **average** LSTd and LSTn in Iceland from 2001 to 2023. Table 5 outlines in June, July, and August, while the lowest **average** annual LST is in December, January, and

Figure 4: Monthly **average** LSTd and LSTn in Iceland from 2001-2023

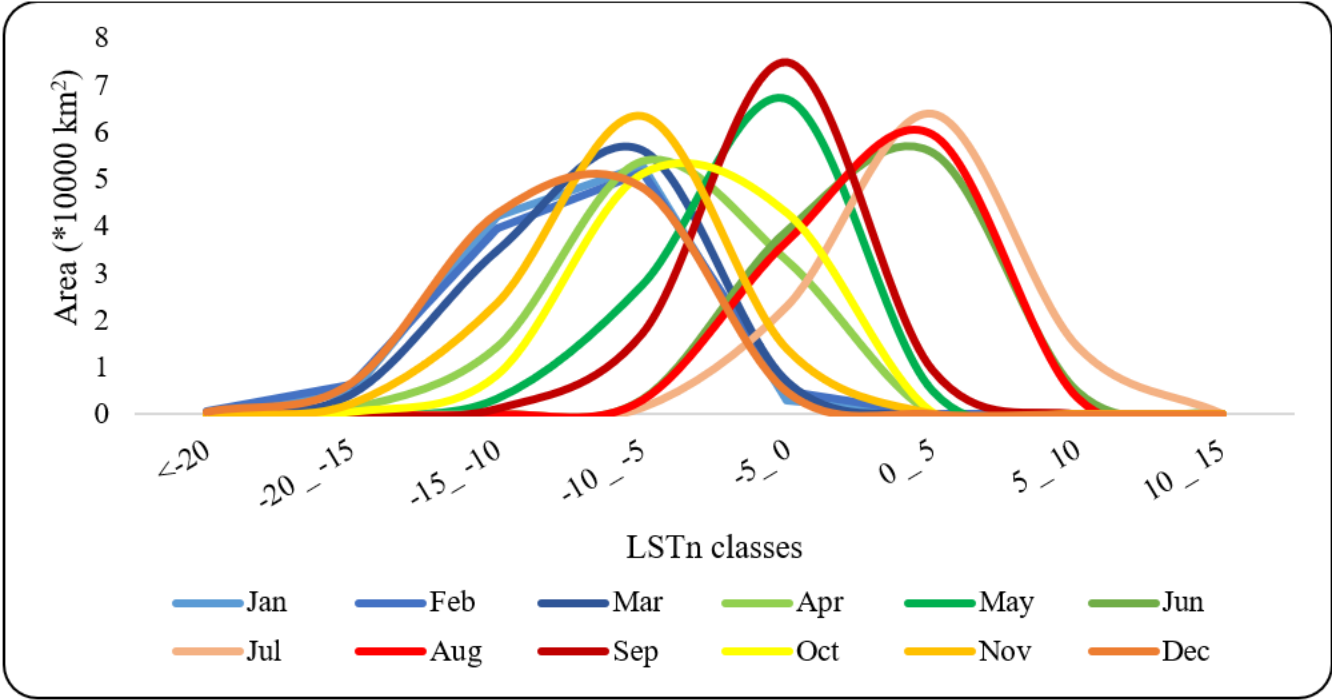


Figure 3: Monthly LSTd and LSTn classes in Iceland from 2001-2023

Figure 4 displays the monthly **average** LSTd and LSTn in Iceland from 2001 to 2023. Table 5 outlines the minimum and maximum LSTd and LSTn during this period. The highest LSTd and LSTn occur in June, July, and August, while the lowest **average** annual LST is in December, January, and February. Generally,