

# Upplausn lagar ekki allt í nýjum loftslagslíkanakeyrslum

A.m.k. ekki í jaðarlaginu...

Resolution dependence of the turbulent atmospheric boundary layer in global storm-resolving climate simulations

Linnea Huusko, **Páll Ágúst Þórarinnsson**, Joakim Pyykkö og Gunilla Svensson

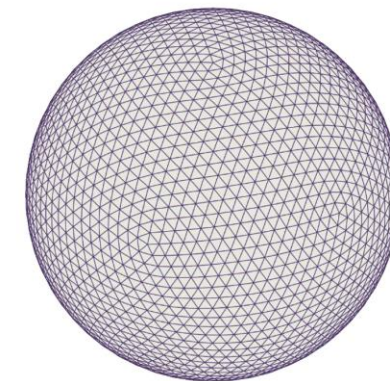
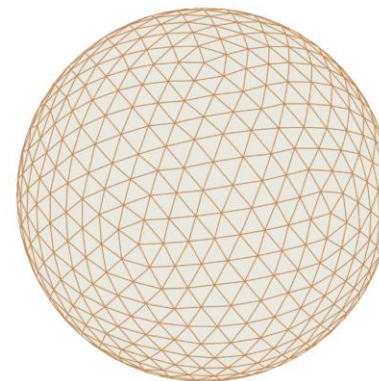
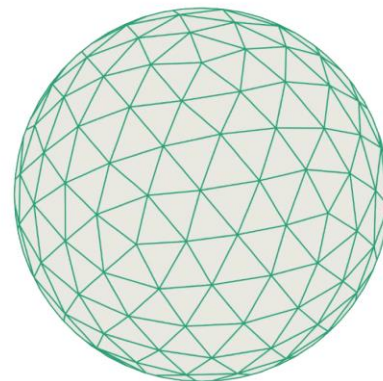
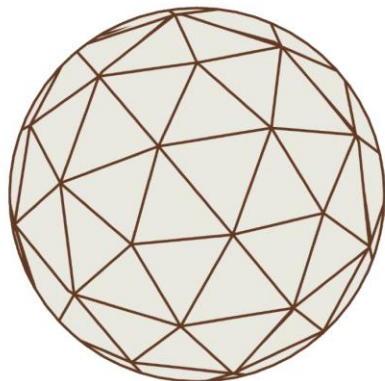
11 000 000 EUR  
=  
1 631 526 110 ISK

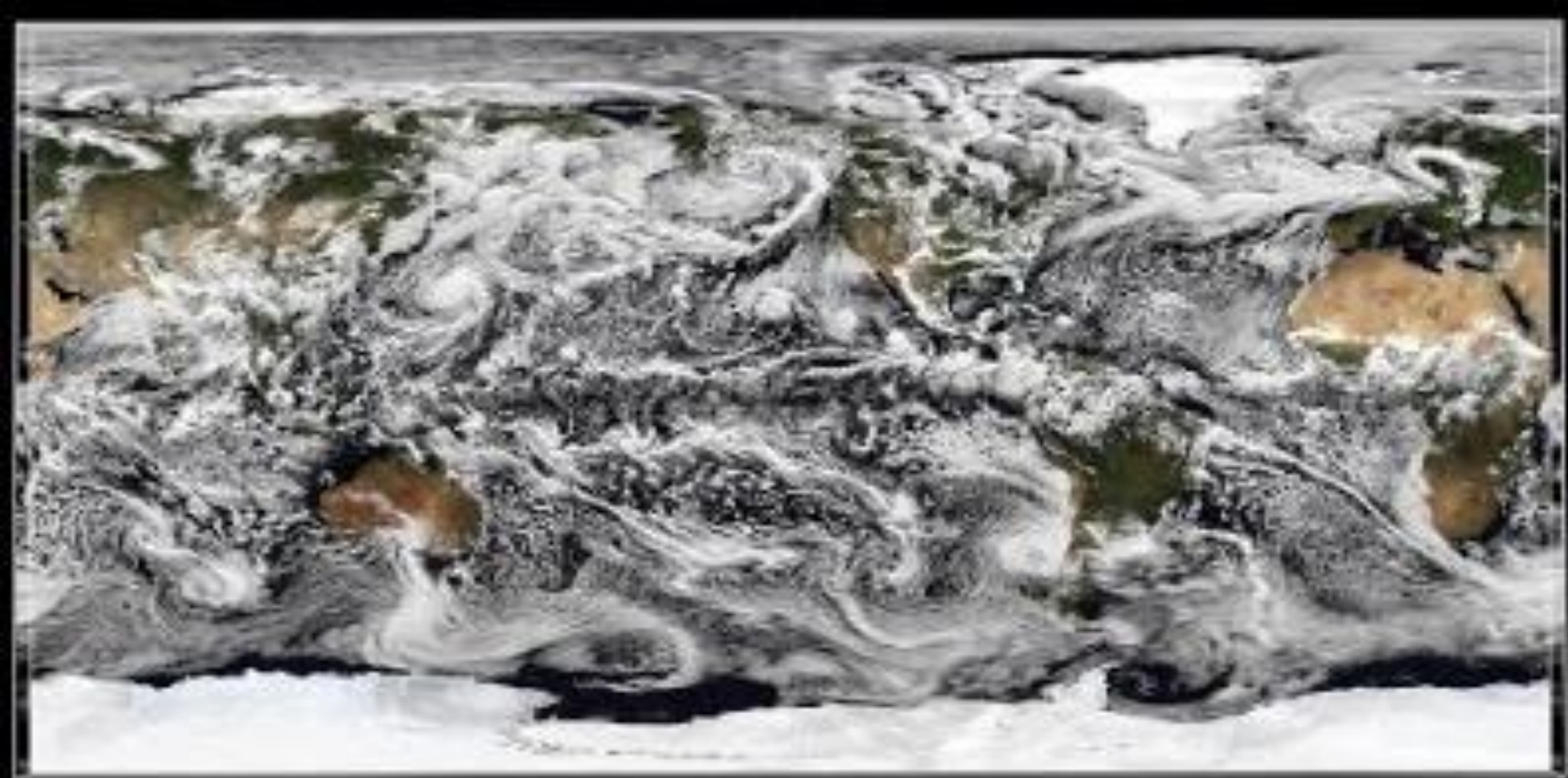


next  
GEMS

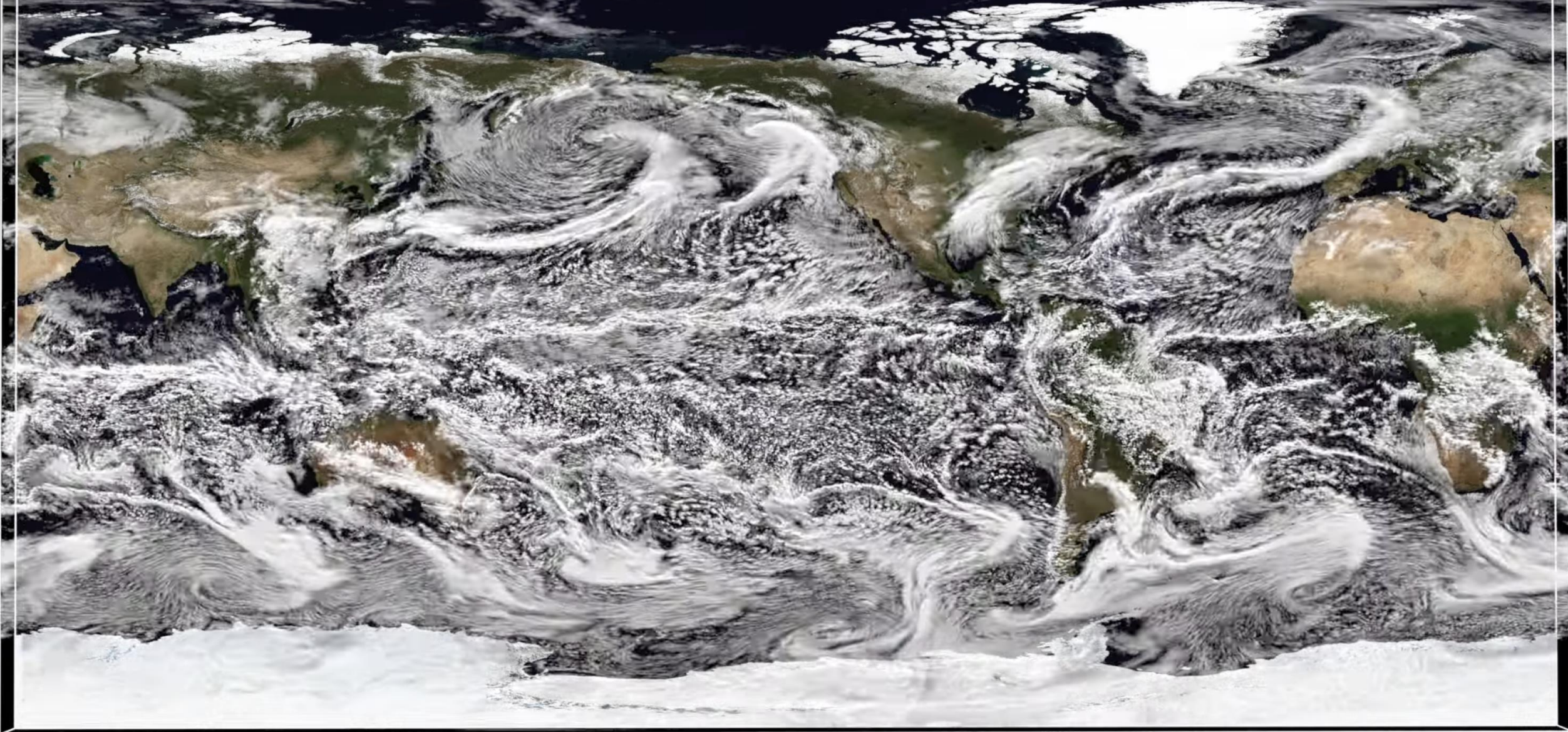


MAX-PLANCK-INSTITUT  
FÜR METEOROLOGIE









25/02/2020 18:00

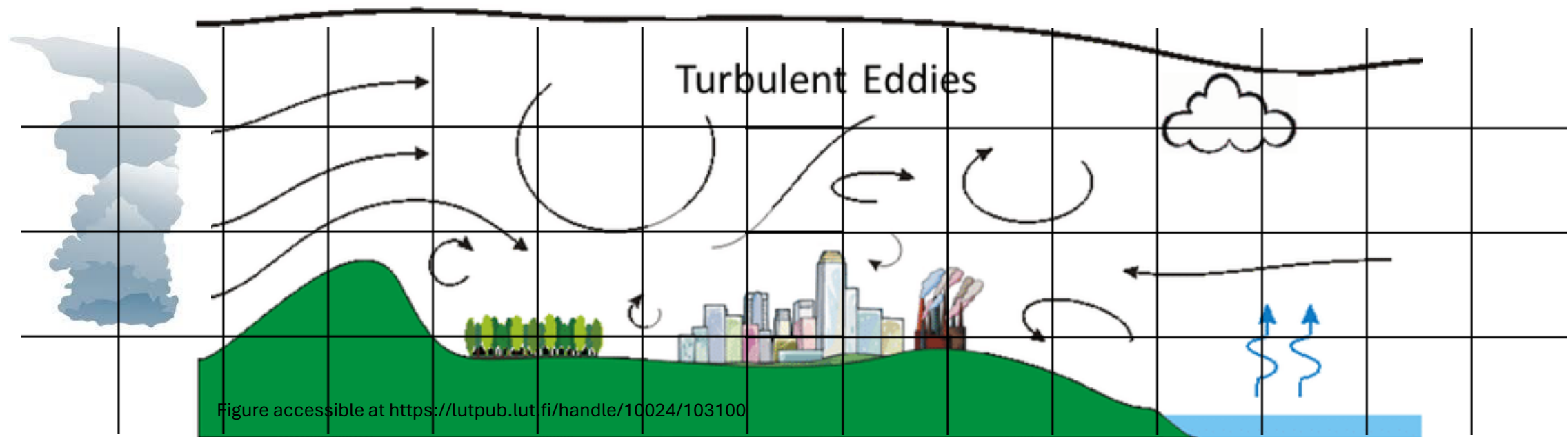
Sum of cloud water and ice ( $\text{kg kg}^{-1}$ )

(C) CEN/MPI-M/UHH

# nextGEMS keyrslurnar



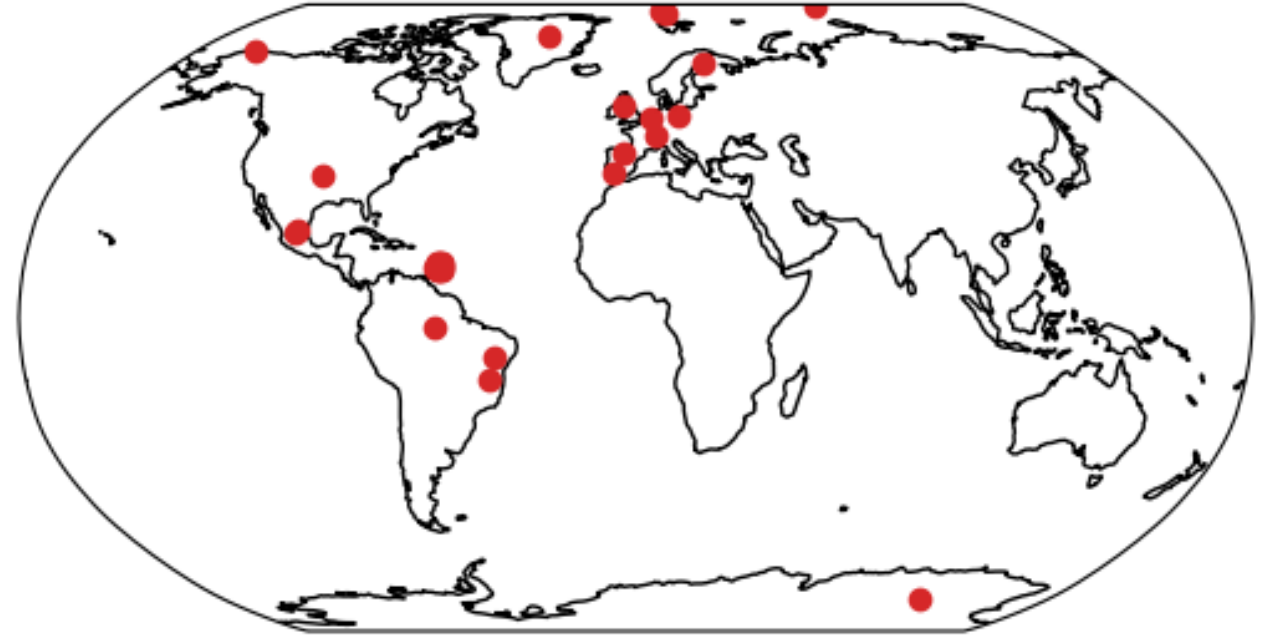
9 km, 4 km og 2.5 km  
lárétt upplausn

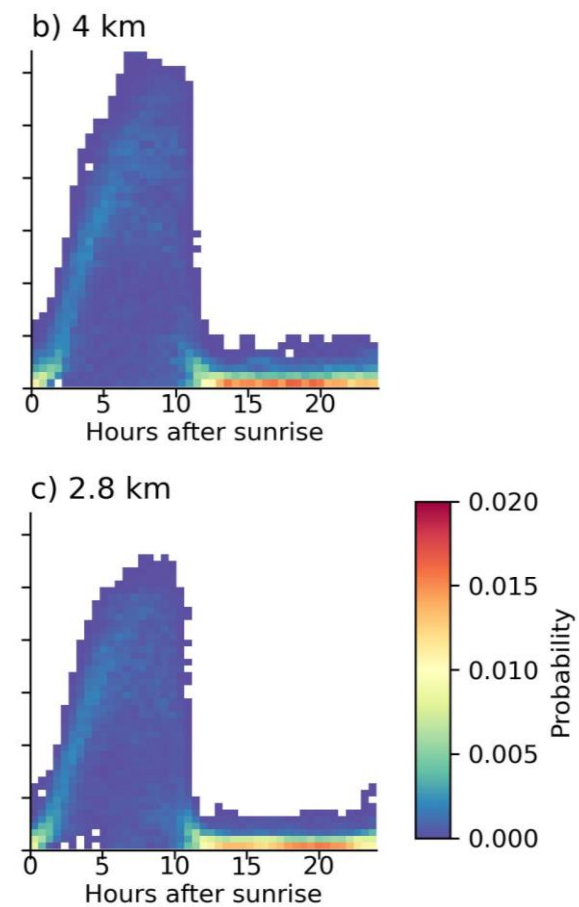
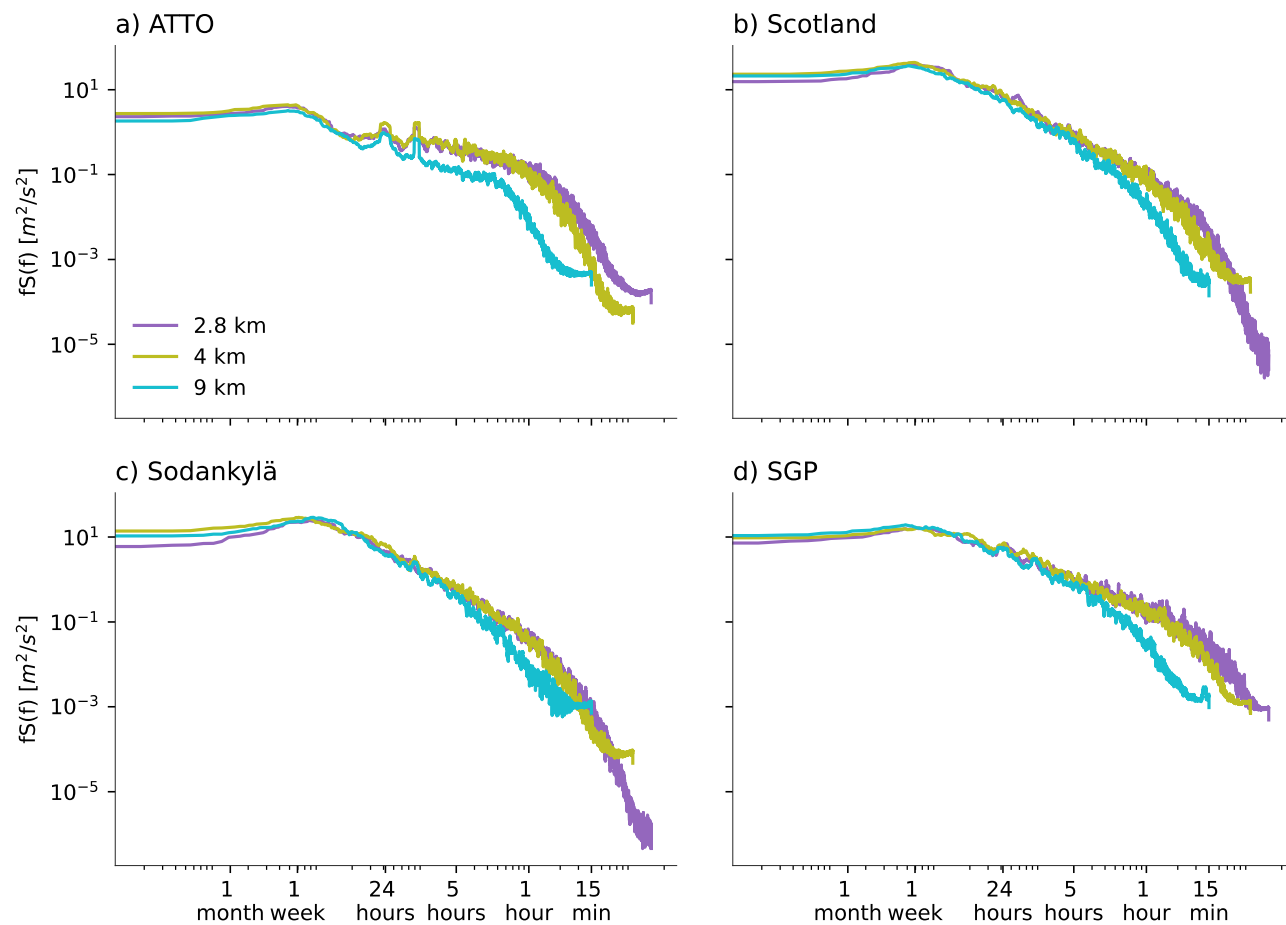
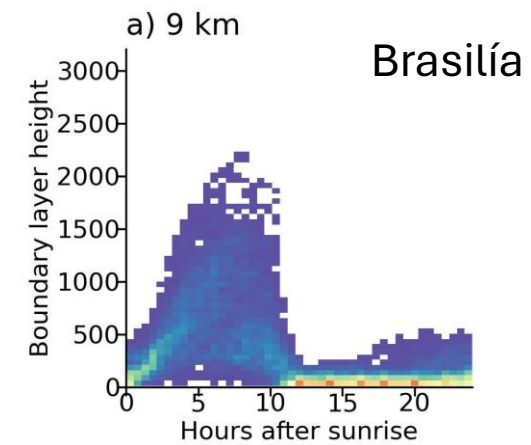
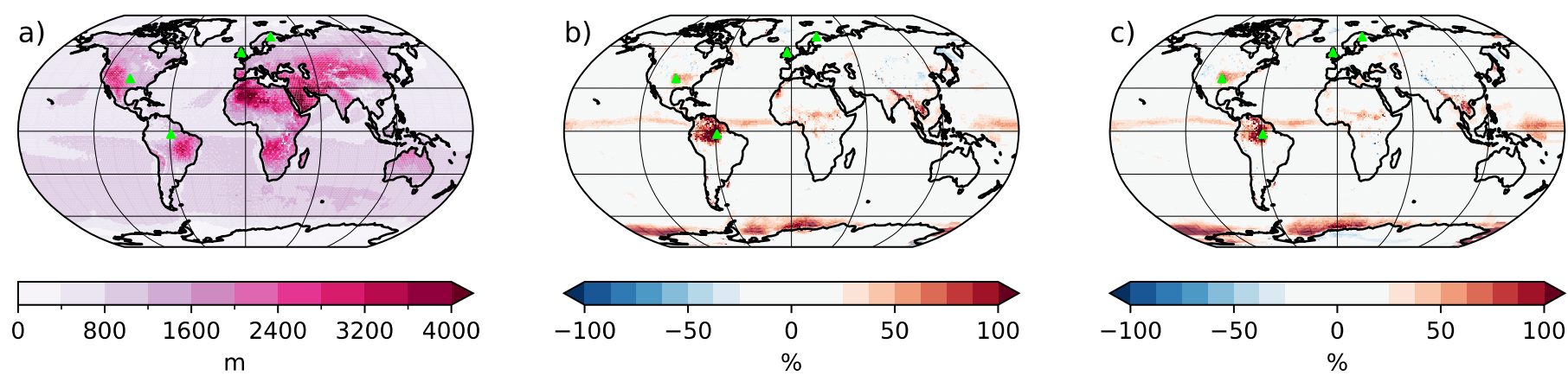




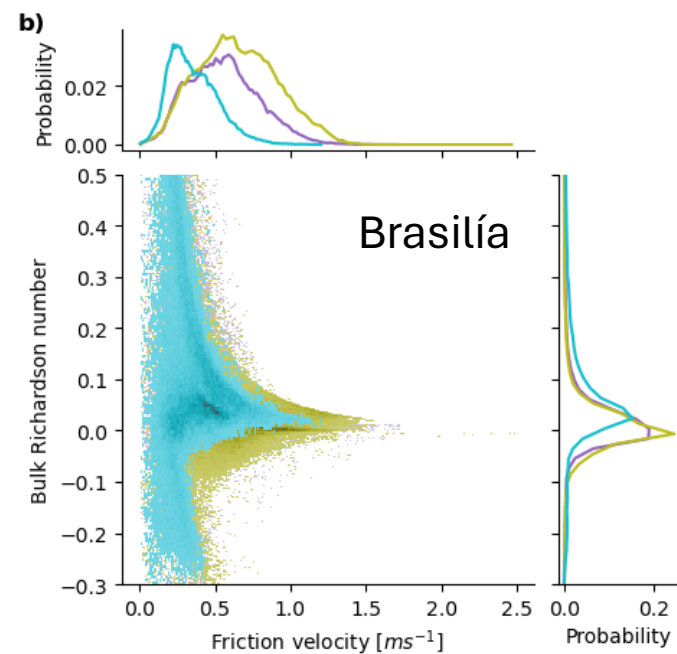
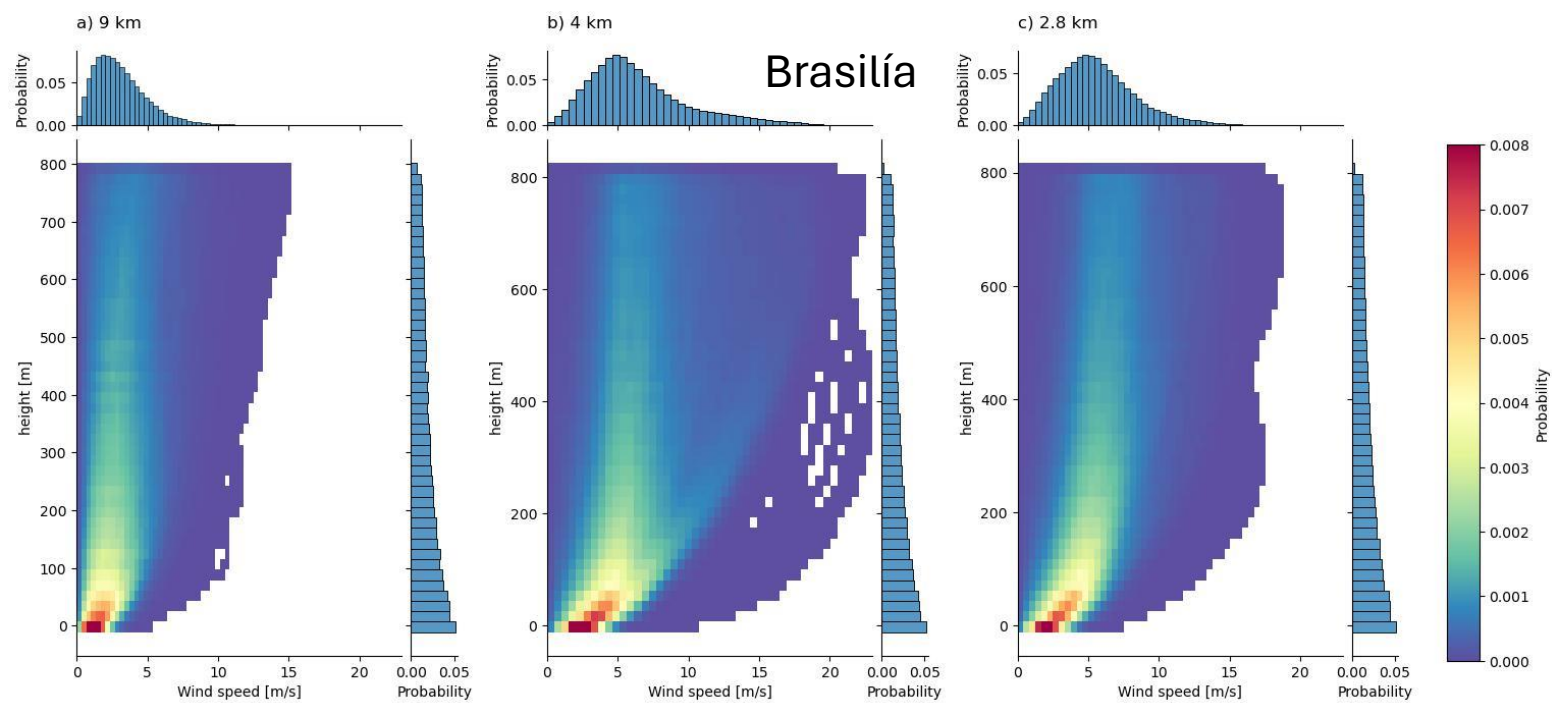
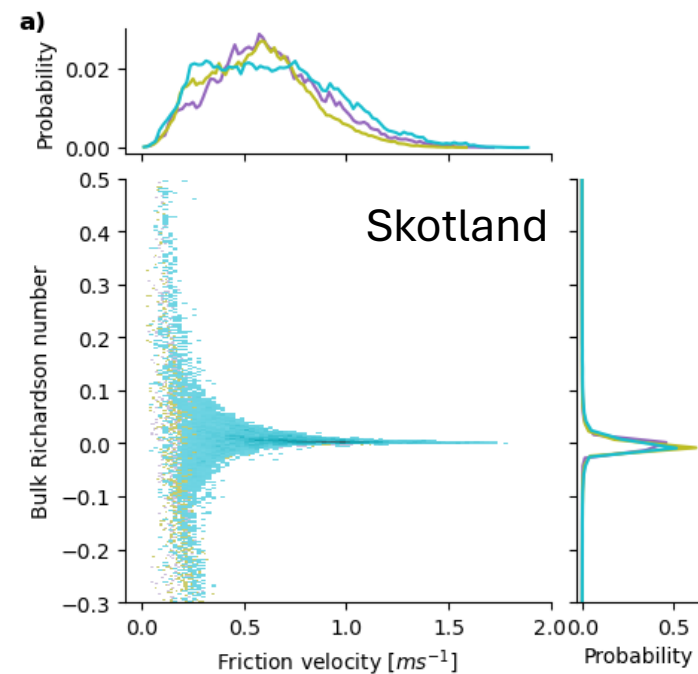
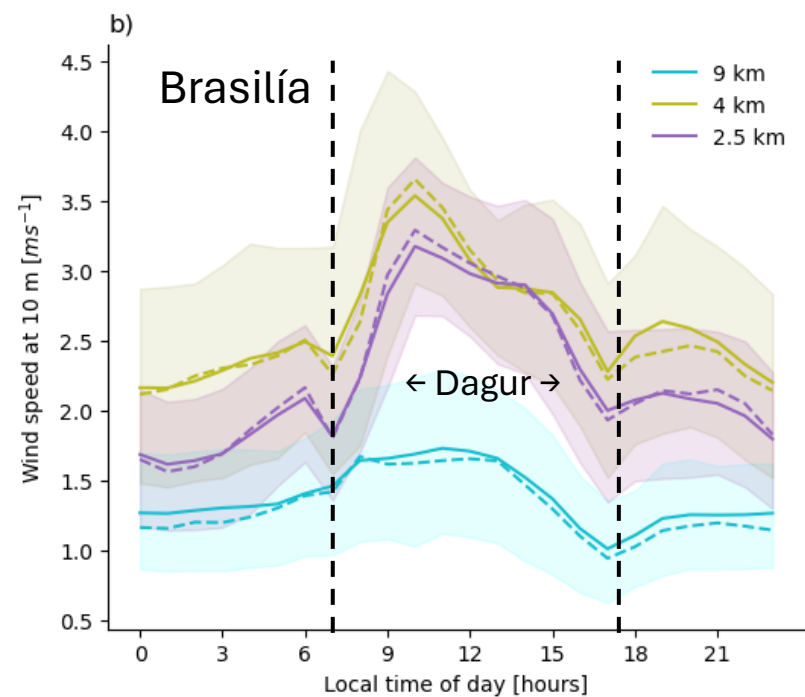
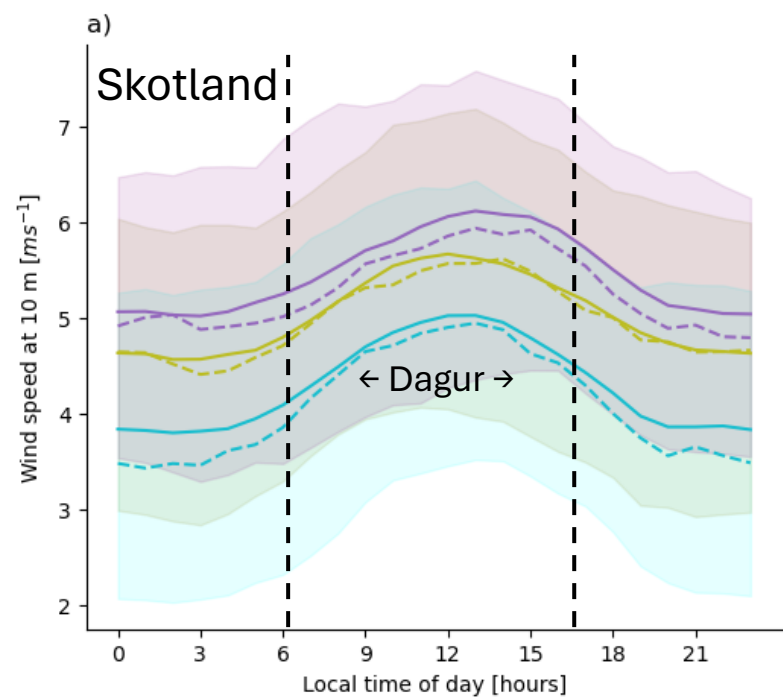
# Gagnavandamál

- Ekki samræmi milli IFS og ICON
- Lítið vistað af stikum úr 2D og sérstaklega 3D
- Gríðarlega stórar skrár
- Meira vistað í ákeðnum punctum
  - Enginn yfir hafi
  - Ekki jafndreifðir
- Möguleiki á að hafa áhrif á hvað verður vistað í lokakeyrslum (hvatninging fyrir þessari skoðun)









# The effects on the general circulation

## Zonally averaged zonal wind

